

FITC Anti-Mouse CD11a Monoclonal Antibody



天津三箭生物技术股份有限公司
Tianjin Sungene Biotech Co., Ltd.
精准 高效 稳定 Precision Efficient Stable

Catalog Number	Vial Size
M10113-02B	50 µg
M10113-02E	500 µg

Market | 400-621-0003
marketing@sungenebiotech.com

Support | 022-66211636-8024
techsupport@sungenebiotech.com

Web | www.sungenebiotech.com

Important Note: Centrifuge before opening to ensure complete recovery of vial contents.
This product is guaranteed up to one year from purchase.

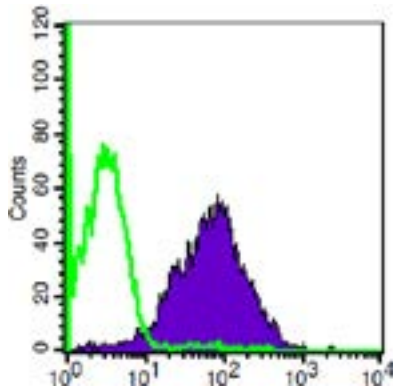
Purified Antibody Characterization

Clone	Isotype	Reactivity
M17/4	Rat IgG2a	Mouse

Description

CD11a is a 180 kD glycoprotein, also known as α L integrin, LFA-1 α , Ly-15, or Ly-21. It is a member of the integrin family, primarily expressed on lymphocytes, monocytes/macrophages, and granulocytes. In association with CD18, the CD11a/CD18 complex forms LFA-1. CD11a plays an important role in intercellular adhesion and costimulation by binding its ligands, ICAM-1 (CD54), ICAM-2 (CD102), and ICAM-3 (CD50).

Illustration of Immunofluorescent Staining



Log Fluorescence Intensity

C57BL/6 mouse splenocytes stained with FITC anti-mouse CD11a

Product Information

Conjugation: FITC

Formulation: PBS pH 7.2, 0.09% NaN_3 , 0.2% BSA

Concentration: 0.5 mg/ml

Storage: Keep as concentrated solution. Store at 4°C and protected from prolonged exposure to light. **Do not freeze.**

Application: Recommended Application: FC

Usage: Each lot of this antibody is quality control tested by immunofluorescent staining with flow cytometric analysis (The amount of the reagent is suggested to be used $\leq 1.0 \mu\text{g}/10^6$ cells in 100 μl). Since applications vary, the appropriate dilutions must be determined for individual use.

References

- [1] Barclay A, et al. 1997. The Leukocyte Antigen FactsBook Academic Press.
- [2] Springer TA. 1994. Cell 76:301.
- [3] Lub M, et al. 1995. Immunol. Today 16:479.

For Research Use Only.